

# Warm-ups in Eb/Bb

Conductor  
(Flute)

Scott McKee

## 1. Eb Concert 5's

Musical notation for Eb Concert 5's: Treble clef, Eb key signature, 4/4 time signature. The melody consists of eighth-note quintuplets in the right hand, with a whole note chord in the left hand at the end of the phrase.

## 2. Bb Concert 5's

Musical notation for Bb Concert 5's: Treble clef, Bb key signature, 4/4 time signature. The melody consists of eighth-note quintuplets in the right hand, with a whole note chord in the left hand at the end of the phrase.

## 3. Eb Concert Scale

Musical notation for Eb Concert Scale: Treble clef, Eb key signature, 4/4 time signature. The melody is a scale of eighth notes in the right hand, with a whole note chord in the left hand at the end of the phrase.

## 4. Eb Concert Triads & Thirds

Musical notation for Eb Concert Triads & Thirds: Treble clef, Eb key signature, 4/4 time signature. The melody consists of eighth-note triads and thirds in the right hand, with a whole note chord in the left hand at the end of the phrase.

## 5. Bb Concert Triads & Thirds

Musical notation for Bb Concert Triads & Thirds: Treble clef, Bb key signature, 4/4 time signature. The melody consists of eighth-note triads and thirds in the right hand, with a whole note chord in the left hand at the end of the phrase.

## 6. Rhythm Patterns

Musical notation for Pattern A: Treble clef, Eb key signature, 4/4 time signature. The melody consists of eighth-note patterns in the right hand, with a whole note chord in the left hand at the end of the phrase.

Musical notation for Pattern B: Treble clef, Eb key signature, 3/4 time signature. The melody consists of eighth-note patterns in the right hand, with a whole note chord in the left hand at the end of the phrase.

Musical notation for Pattern C: Treble clef, Eb key signature, 4/4 time signature. The melody consists of sixteenth-note patterns in the right hand, with a whole note chord in the left hand at the end of the phrase.

Musical notation for Pattern D: Treble clef, Eb key signature, 4/4 time signature. The melody consists of eighth-note patterns in the right hand, with a whole note chord in the left hand at the end of the phrase.

Musical notation for Pattern E: Treble clef, Eb key signature, 2/4 time signature. The melody consists of eighth-note patterns in the right hand, with a whole note chord in the left hand at the end of the phrase.

## 7. Warm-up (Unison/Duet/Chord)

Musical notation for Warm-up (Unison/Duet/Chord): Treble clef, Eb key signature, 4/4 time signature. The melody consists of quarter notes in the right hand, with a whole note chord in the left hand at the end of the phrase.

do re me fa sol do,do re,ti me,la fa,sol do,sol do re me fa sol

# Warm-ups in Eb/Bb

Flute

Scott McKee

## 1. Eb Concert 5's

Musical notation for Eb Concert 5's: Treble clef, Eb key signature (two flats), 4/4 time signature. The melody consists of eighth-note quintuplets (5's) in the right hand, starting on G4 and ascending to D5, followed by a whole rest.

## 2. Bb Concert 5's

Musical notation for Bb Concert 5's: Treble clef, Bb key signature (three flats), 4/4 time signature. The melody consists of eighth-note quintuplets (5's) in the right hand, starting on F4 and ascending to C5, followed by a whole rest.

## 3. Eb Concert Scale

Musical notation for Eb Concert Scale: Treble clef, Eb key signature (two flats), 4/4 time signature. The melody is a scale of eighth notes in the right hand, starting on G4 and ascending to D5, followed by a whole rest.

## 4. Eb Concert Triads & Thirds

Musical notation for Eb Concert Triads & Thirds: Treble clef, Eb key signature (two flats), 4/4 time signature. The melody consists of eighth-note triads and thirds in the right hand, starting on G4 and ascending to D5, followed by a whole rest.

## 5. Bb Concert Triads & Thirds

Musical notation for Bb Concert Triads & Thirds: Treble clef, Bb key signature (three flats), 4/4 time signature. The melody consists of eighth-note triads and thirds in the right hand, starting on F4 and ascending to C5, followed by a whole rest.

## 6. Rhythm Patterns

Musical notation for Pattern A: Treble clef, Eb key signature (two flats), 4/4 time signature. The melody consists of eighth-note patterns in the right hand, starting on G4 and ascending to D5, followed by a whole rest.

Musical notation for Pattern B: Treble clef, Eb key signature (two flats), 3/4 time signature. The melody consists of eighth-note patterns in the right hand, starting on G4 and ascending to D5, followed by a whole rest.

Musical notation for Pattern C: Treble clef, Eb key signature (two flats), 4/4 time signature. The melody consists of sixteenth-note patterns in the right hand, starting on G4 and ascending to D5, followed by a whole rest.

Musical notation for Pattern D: Treble clef, Eb key signature (two flats), 4/4 time signature. The melody consists of eighth-note patterns in the right hand, starting on G4 and ascending to D5, followed by a whole rest.

Musical notation for Pattern E: Treble clef, Eb key signature (two flats), 2/4 time signature. The melody consists of eighth-note patterns in the right hand, starting on G4 and ascending to D5, followed by a whole rest.

## 7. Warm-up (Unison/Duet/Chord)

Musical notation for Warm-up (Unison/Duet/Chord): Treble clef, Eb key signature (two flats), 4/4 time signature. The melody consists of quarter notes in the right hand, starting on G4 and ascending to D5, followed by a whole rest.

do re me fa sol do,do re,ti me,la fa,sol do,sol do re me fa sol

# Warm-ups in Eb/Bb

Flute

Scott McKee

## 1. Eb Concert 5's

Musical notation for Eb Concert 5's: Treble clef, Eb key signature, 4/4 time signature. The exercise consists of four measures of eighth-note pairs (G4-A4, Bb4-C5, D5-E5, F5-G5) with a slur over each pair, followed by a whole rest.

## 2. Bb Concert 5's

Musical notation for Bb Concert 5's: Treble clef, Bb key signature, 4/4 time signature. The exercise consists of four measures of eighth-note pairs (G4-A4, Bb4-C5, D5-E5, F5-G5) with a slur over each pair, followed by a whole rest.

## 3. Eb Concert Scale

Musical notation for Eb Concert Scale: Treble clef, Eb key signature, 4/4 time signature. The exercise consists of four measures of eighth-note pairs (G4-A4, Bb4-C5, D5-E5, F5-G5) with a slur over each pair, followed by a whole rest.

## 4. Eb Concert Triads & Thirds

Musical notation for Eb Concert Triads & Thirds: Treble clef, Eb key signature, 4/4 time signature. The exercise consists of four measures of eighth-note pairs (G4-A4, Bb4-C5, D5-E5, F5-G5) with a slur over each pair, followed by a whole rest.

## 5. Bb Concert Triads & Thirds

Musical notation for Bb Concert Triads & Thirds: Treble clef, Bb key signature, 4/4 time signature. The exercise consists of four measures of eighth-note pairs (G4-A4, Bb4-C5, D5-E5, F5-G5) with a slur over each pair, followed by a whole rest.

## 6. Rhythm Patterns

Musical notation for Rhythm Pattern A: Treble clef, Eb key signature, 4/4 time signature. The exercise consists of four measures of eighth-note pairs (G4-A4, Bb4-C5, D5-E5, F5-G5) with a slur over each pair, followed by a whole rest.

Musical notation for Rhythm Pattern B: Treble clef, Eb key signature, 3/4 time signature. The exercise consists of four measures of eighth-note pairs (G4-A4, Bb4-C5, D5-E5, F5-G5) with a slur over each pair, followed by a whole rest.

Musical notation for Rhythm Pattern C: Treble clef, Eb key signature, 4/4 time signature. The exercise consists of four measures of eighth-note pairs (G4-A4, Bb4-C5, D5-E5, F5-G5) with a slur over each pair, followed by a whole rest.

Musical notation for Rhythm Pattern D: Treble clef, Eb key signature, 4/4 time signature. The exercise consists of four measures of eighth-note pairs (G4-A4, Bb4-C5, D5-E5, F5-G5) with a slur over each pair, followed by a whole rest.

Musical notation for Rhythm Pattern E: Treble clef, Eb key signature, 2/4 time signature. The exercise consists of four measures of eighth-note pairs (G4-A4, Bb4-C5, D5-E5, F5-G5) with a slur over each pair, followed by a whole rest.

## 7. Warm-up (Unison/Duet/Chord)

Musical notation for Warm-up (Unison/Duet/Chord): Treble clef, Eb key signature, 4/4 time signature. The exercise consists of four measures of eighth-note pairs (G4-A4, Bb4-C5, D5-E5, F5-G5) with a slur over each pair, followed by a whole rest.

do re me fa sol do,do re,ti me,la fa,sol do,sol do re me fa sol

# Warm-ups in Eb/Bb

Oboe

Scott McKee

## 1. Eb Concert 5's



## 2. Bb Concert 5's



## 3. Eb Concert Scale



## 4. Eb Concert Triads & Thirds



## 5. Bb Concert Triads & Thirds



## 6. Rhythm Patterns

### Pattern A



### Pattern B



### Pattern C



### Pattern D



### Pattern E



## 7. Warm-up (Unison/Duet/Chord)



do re me fa sol do,do re,ti me,la fa,sol do,sol do re me fa sol

# Warm-ups in Eb/Bb

Bassoon

Scott McKee

## 1. Eb Concert 5's

Musical notation for exercise 1. Bass clef, Eb key signature (two flats), 4/4 time signature. The exercise consists of two measures of eighth-note runs, each followed by a whole rest. The first measure starts on G3 and ascends to G4, while the second measure starts on F3 and descends to F2.

## 2. Bb Concert 5's

Musical notation for exercise 2. Bass clef, Bb key signature (three flats), 4/4 time signature. The exercise consists of two measures of eighth-note runs, each followed by a whole rest. The first measure starts on G3 and ascends to G4, while the second measure starts on F3 and descends to F2.

## 3. Eb Concert Scale

Musical notation for exercise 3. Bass clef, Eb key signature (two flats), 4/4 time signature. The exercise consists of two measures of eighth-note runs, each followed by a whole rest. The first measure starts on G3 and ascends to G4, while the second measure starts on F3 and descends to F2.

## 4. Eb Concert Triads & Thirds

Musical notation for exercise 4. Bass clef, Eb key signature (two flats), 4/4 time signature. The exercise consists of two measures of eighth-note runs, each followed by a whole rest. The first measure starts on G3 and ascends to G4, while the second measure starts on F3 and descends to F2.

## 5. Bb Concert Triads & Thirds

Musical notation for exercise 5. Bass clef, Bb key signature (three flats), 4/4 time signature. The exercise consists of two measures of eighth-note runs, each followed by a whole rest. The first measure starts on G3 and ascends to G4, while the second measure starts on F3 and descends to F2.

## 6. Rhythm Patterns

### Pattern A

Musical notation for Pattern A. Bass clef, Eb key signature (two flats), 4/4 time signature. The pattern consists of eighth notes with accents, followed by a whole rest.

### Pattern B

Musical notation for Pattern B. Bass clef, Eb key signature (two flats), 3/4 time signature. The pattern consists of eighth notes with accents, followed by a whole rest.

### Pattern C

Musical notation for Pattern C. Bass clef, Eb key signature (two flats), 4/4 time signature. The pattern consists of eighth notes with accents, followed by a whole rest.

### Pattern D

Musical notation for Pattern D. Bass clef, Eb key signature (two flats), 4/4 time signature. The pattern consists of eighth notes with accents, followed by a whole rest.

### Pattern E

Musical notation for Pattern E. Bass clef, Eb key signature (two flats), 2/4 time signature. The pattern consists of eighth notes with accents, followed by a whole rest.

## 7. Warm-up (Unison/Duet/Chord)

Musical notation for exercise 7. Bass clef, Eb key signature (two flats), 4/4 time signature. The exercise consists of two measures of eighth-note runs, each followed by a whole rest. The first measure starts on G3 and ascends to G4, while the second measure starts on F3 and descends to F2.

do re me fa sol do,do re,ti me,la fa,sol do,sol do re me fa sol

# Warm-ups in Eb/Bb

Clarinet 1

Scott McKee

## 1. Eb Concert 5's

Musical notation for Eb Concert 5's: A single staff in Eb major, 4/4 time, featuring a sequence of eighth-note chords (dyads) moving up and down the scale.

## 2. Bb Concert 5's

Musical notation for Bb Concert 5's: A single staff in Bb major, 4/4 time, featuring a sequence of eighth-note chords (dyads) moving up and down the scale.

## 3. Eb Concert Scale

Musical notation for Eb Concert Scale: A single staff in Eb major, 4/4 time, featuring a sequence of eighth-note chords (dyads) moving up and down the scale.

## 4. Eb Concert Triads & Thirds

Musical notation for Eb Concert Triads & Thirds: A single staff in Eb major, 4/4 time, featuring a sequence of eighth-note chords (dyads) moving up and down the scale.

## 5. Bb Concert Triads & Thirds

Musical notation for Bb Concert Triads & Thirds: A single staff in Bb major, 4/4 time, featuring a sequence of eighth-note chords (dyads) moving up and down the scale.

## 6. Rhythm Patterns

Pattern A

Musical notation for Pattern A: A single staff in Eb major, 4/4 time, featuring a sequence of eighth-note chords (dyads) moving up and down the scale.

Pattern B

Musical notation for Pattern B: A single staff in Eb major, 3/4 time, featuring a sequence of eighth-note chords (dyads) moving up and down the scale.

Pattern C

Musical notation for Pattern C: A single staff in Eb major, 4/4 time, featuring a sequence of eighth-note chords (dyads) moving up and down the scale.

Pattern D

Musical notation for Pattern D: A single staff in Eb major, 4/4 time, featuring a sequence of eighth-note chords (dyads) moving up and down the scale.

Pattern E

Musical notation for Pattern E: A single staff in Eb major, 2/4 time, featuring a sequence of eighth-note chords (dyads) moving up and down the scale.

## 7. Warm-up (Unison/Duet/Chord)

Musical notation for Warm-up (Unison/Duet/Chord): A single staff in Eb major, 4/4 time, featuring a sequence of eighth-note chords (dyads) moving up and down the scale.

do re me fa sol do,do re,ti me,la fa,sol do,sol do re me fa sol

# Warm-ups in Eb/Bb

Clarinet 2 & 3

Scott McKee

## 1. Eb Concert 5's

Musical notation for Eb Concert 5's: Treble clef, Eb key signature, 4/4 time signature. The exercise consists of two measures of eighth-note pairs (G4-A4, Bb4-C5, D5-E5, F5-G5) followed by a whole rest.

## 2. Bb Concert 5's

Musical notation for Bb Concert 5's: Treble clef, Bb key signature, 4/4 time signature. The exercise consists of two measures of eighth-note pairs (F4-G4, Ab4-Bb4, C5-D5, Eb5-F5) followed by a whole rest.

## 3. Eb Concert Scale

Musical notation for Eb Concert Scale: Treble clef, Eb key signature, 4/4 time signature. The exercise consists of two measures of eighth-note pairs (G4-A4, Bb4-C5, D5-E5, F5-G5) followed by a whole rest.

## 4. Eb Concert Triads & Thirds

Musical notation for Eb Concert Triads & Thirds: Treble clef, Eb key signature, 4/4 time signature. The exercise consists of two measures of eighth-note pairs (G4-A4, Bb4-C5, D5-E5, F5-G5) followed by a whole rest.

## 5. Bb Concert Triads & Thirds

Musical notation for Bb Concert Triads & Thirds: Treble clef, Bb key signature, 4/4 time signature. The exercise consists of two measures of eighth-note pairs (F4-G4, Ab4-Bb4, C5-D5, Eb5-F5) followed by a whole rest.

## 6. Rhythm Patterns

Pattern A

Musical notation for Rhythm Pattern A: Treble clef, Eb key signature, 4/4 time signature. The exercise consists of two measures of eighth-note pairs (G4-A4, Bb4-C5, D5-E5, F5-G5) followed by a whole rest.

Pattern B

Musical notation for Rhythm Pattern B: Treble clef, Eb key signature, 3/4 time signature. The exercise consists of two measures of eighth-note pairs (G4-A4, Bb4-C5, D5-E5, F5-G5) followed by a whole rest.

Pattern C

Musical notation for Rhythm Pattern C: Treble clef, Eb key signature, 4/4 time signature. The exercise consists of two measures of eighth-note pairs (G4-A4, Bb4-C5, D5-E5, F5-G5) followed by a whole rest.

Pattern D

Musical notation for Rhythm Pattern D: Treble clef, Eb key signature, 4/4 time signature. The exercise consists of two measures of eighth-note pairs (G4-A4, Bb4-C5, D5-E5, F5-G5) followed by a whole rest.

Pattern E

Musical notation for Rhythm Pattern E: Treble clef, Eb key signature, 2/4 time signature. The exercise consists of two measures of eighth-note pairs (G4-A4, Bb4-C5, D5-E5, F5-G5) followed by a whole rest.

## 7. Warm-up (Unison/Duet/Chord)

Musical notation for Warm-up: Treble clef, Eb key signature, 4/4 time signature. The exercise consists of two measures of eighth-note pairs (G4-A4, Bb4-C5, D5-E5, F5-G5) followed by a whole rest.

do re me fa sol do,do re,ti me,la fa,sol do,sol do re me fa sol

# Warm-ups in Eb/Bb

Bass Clarinet

Scott McKee

## 1. Eb Concert 5's

Musical notation for Eb Concert 5's: A staff in Eb major, 4/4 time, featuring eighth-note patterns on the fifth line of the staff.

## 2. Bb Concert 5's

Musical notation for Bb Concert 5's: A staff in Bb major, 4/4 time, featuring eighth-note patterns on the fifth line of the staff.

## 3. Eb Concert Scale

Musical notation for Eb Concert Scale: A staff in Eb major, 4/4 time, showing a scale exercise with eighth-note patterns.

## 4. Eb Concert Triads & Thirds

Musical notation for Eb Concert Triads & Thirds: A staff in Eb major, 4/4 time, featuring triads and thirds exercises.

## 5. Bb Concert Triads & Thirds

Musical notation for Bb Concert Triads & Thirds: A staff in Bb major, 4/4 time, featuring triads and thirds exercises.

## 6. Rhythm Patterns

### Pattern A

Musical notation for Pattern A: A staff in Eb major, 4/4 time, showing a rhythmic pattern with eighth notes and rests.

### Pattern B

Musical notation for Pattern B: A staff in Eb major, 3/4 time, showing a rhythmic pattern with eighth notes and rests.

### Pattern C

Musical notation for Pattern C: A staff in Eb major, 4/4 time, showing a rhythmic pattern with sixteenth notes.

### Pattern D

Musical notation for Pattern D: A staff in Eb major, 4/4 time, showing a rhythmic pattern with eighth notes and rests.

### Pattern E

Musical notation for Pattern E: A staff in Eb major, 2/4 time, showing a rhythmic pattern with eighth notes.

## 7. Warm-up (Unison/Duet/Chord)

Musical notation for Warm-up: A staff in Eb major, 4/4 time, showing a warm-up exercise with unison, duet, and chord exercises. The notes are: do, re, me, fa, sol, do, do, re, ti, me, la, fa, sol, do, sol, do, re, me, fa, sol.

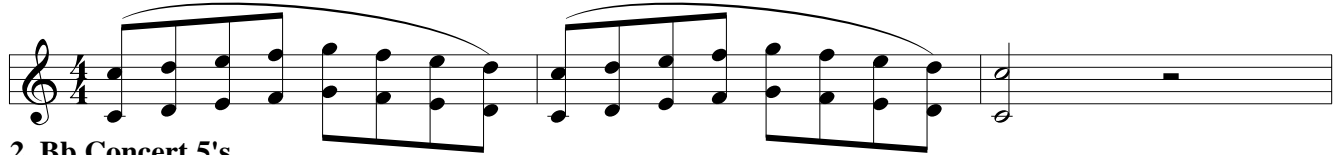


# Warm-ups in Eb/Bb

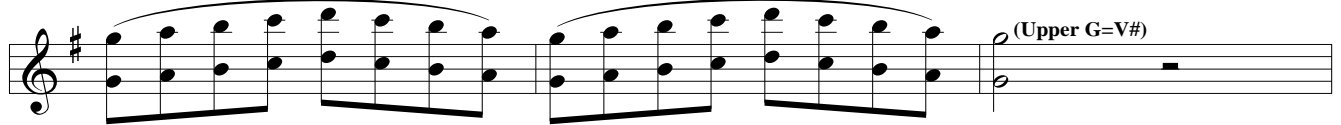
Alto Sax

Scott McKee

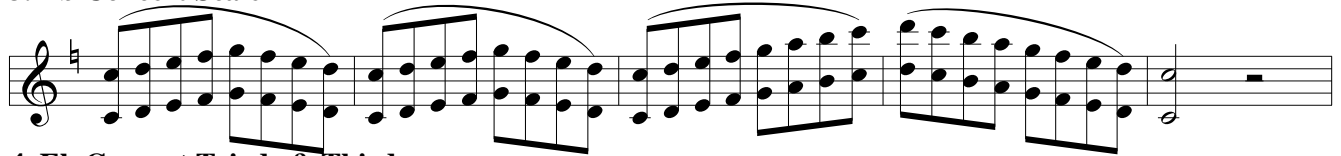
## 1. Eb Concert 5's

Musical notation for Eb Concert 5's: Treble clef, 4/4 time signature. The melody consists of a series of eighth-note chords, each containing a perfect fifth interval. The notes are G3, Bb3, D4, and F4. The piece concludes with a whole rest on a low G3.

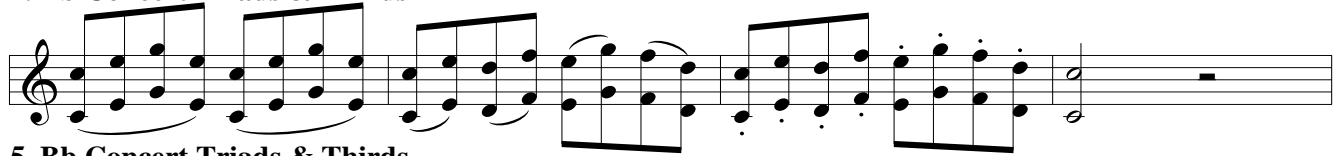
## 2. Bb Concert 5's

Musical notation for Bb Concert 5's: Treble clef, 4/4 time signature. The melody consists of a series of eighth-note chords, each containing a perfect fifth interval. The notes are G3, Bb3, D4, and F4. The piece concludes with a whole rest on a low G3, labeled "(Upper G=V#)".

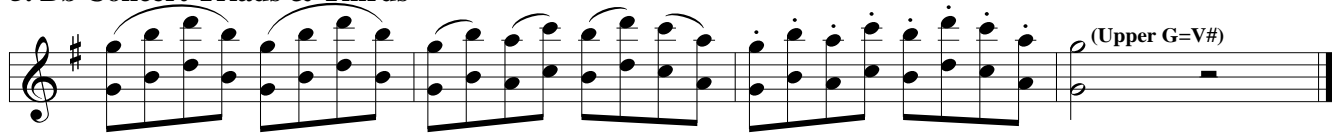
## 3. Eb Concert Scale

Musical notation for Eb Concert Scale: Treble clef, 4/4 time signature. The melody is a scale of eighth-note chords, each containing a perfect fifth interval. The notes are G3, Bb3, D4, and F4. The piece concludes with a whole rest on a low G3.

## 4. Eb Concert Triads & Thirds

Musical notation for Eb Concert Triads & Thirds: Treble clef, 4/4 time signature. The melody consists of eighth-note chords, each containing a perfect fifth interval. The notes are G3, Bb3, D4, and F4. The piece concludes with a whole rest on a low G3.

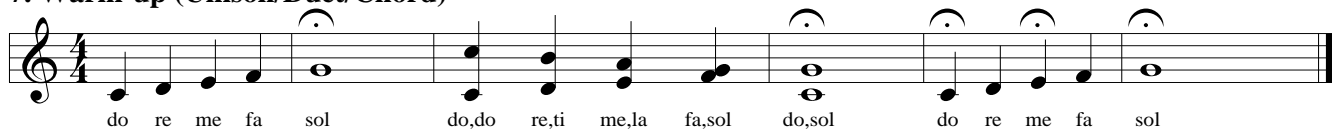
## 5. Bb Concert Triads & Thirds

Musical notation for Bb Concert Triads & Thirds: Treble clef, 4/4 time signature. The melody consists of eighth-note chords, each containing a perfect fifth interval. The notes are G3, Bb3, D4, and F4. The piece concludes with a whole rest on a low G3, labeled "(Upper G=V#)".

## 6. Rhythm Patterns

Musical notation for Pattern A: Treble clef, 4/4 time signature. The melody consists of eighth-note chords, each containing a perfect fifth interval. The notes are G3, Bb3, D4, and F4. The piece concludes with a whole rest on a low G3, labeled "(Upper G=V#)".Musical notation for Pattern B: Treble clef, 3/4 time signature. The melody consists of eighth-note chords, each containing a perfect fifth interval. The notes are G3, Bb3, D4, and F4. The piece concludes with a whole rest on a low G3, labeled "(Upper G=V#)".Musical notation for Pattern C: Treble clef, 4/4 time signature. The melody consists of eighth-note chords, each containing a perfect fifth interval. The notes are G3, Bb3, D4, and F4. The piece concludes with a whole rest on a low G3, labeled "(Upper G=V#)".Musical notation for Pattern D: Treble clef, 4/4 time signature. The melody consists of eighth-note chords, each containing a perfect fifth interval. The notes are G3, Bb3, D4, and F4. The piece concludes with a whole rest on a low G3, labeled "(Upper G=V#)".Musical notation for Pattern E: Treble clef, 2/4 time signature. The melody consists of eighth-note chords, each containing a perfect fifth interval. The notes are G3, Bb3, D4, and F4. The piece concludes with a whole rest on a low G3, labeled "(Upper G=V#)".

## 7. Warm-up (Unison/Duet/Chord)

Musical notation for Warm-up: Treble clef, 4/4 time signature. The melody consists of whole notes. The notes are G3, Bb3, D4, and F4. The piece concludes with a whole rest on a low G3.

do re me fa sol do,do re,ti me,la fa,sol do,sol do re me fa sol

# Warm-ups in Eb/Bb

Tenor Sax

Scott McKee

## 1. Eb Concert 5's



## 2. Bb Concert 5's



## 3. Eb Concert Scale



## 4. Eb Concert Triads & Thirds



## 5. Bb Concert Triads & Thirds



## 6. Rhythm Patterns

### Pattern A



### Pattern B



### Pattern C



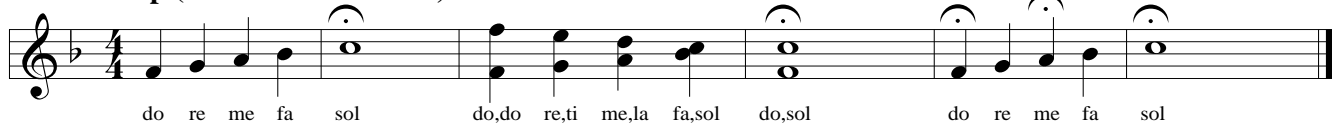
### Pattern D



### Pattern E



## 7. Warm-up (Unison/Duet/Chord)



do re me fa sol do,do re,ti me,la fa,sol do,sol do re me fa sol

# Warm-ups in Eb/Bb

Baritone Sax

Scott McKee

## 1. Eb Concert 5's

Musical notation for Eb Concert 5's in 4/4 time. The exercise consists of four measures of eighth-note pairs, each pair beamed together and slurred. The notes are: G4-A4, Bb4-C5, D5-E5, F5-G5. The final measure contains a whole rest.

## 2. Bb Concert 5's

Musical notation for Bb Concert 5's in 4/4 time. The exercise consists of four measures of eighth-note pairs, each pair beamed together and slurred. The notes are: G4-A4, Bb4-C5, D5-E5, F5-G5. The final measure contains a whole rest with the annotation "(Upper G=V#)".

## 3. Eb Concert Scale

Musical notation for Eb Concert Scale in 4/4 time. The exercise consists of four measures of eighth-note pairs, each pair beamed together and slurred. The notes are: G4-A4, Bb4-C5, D5-E5, F5-G5. The final measure contains a whole rest.

## 4. Eb Concert Triads & Thirds

Musical notation for Eb Concert Triads & Thirds in 4/4 time. The exercise consists of four measures of eighth-note pairs, each pair beamed together and slurred. The notes are: G4-A4, Bb4-C5, D5-E5, F5-G5. The final measure contains a whole rest.

## 5. Bb Concert Triads & Thirds

Musical notation for Bb Concert Triads & Thirds in 4/4 time. The exercise consists of four measures of eighth-note pairs, each pair beamed together and slurred. The notes are: G4-A4, Bb4-C5, D5-E5, F5-G5. The final measure contains a whole rest with the annotation "(Upper G=V#)".

## 6. Rhythm Patterns

Musical notation for Pattern A in 4/4 time. The exercise consists of five measures of eighth-note pairs, each pair beamed together and slurred. The notes are: G4-A4, Bb4-C5, D5-E5, F5-G5. The final measure contains a whole rest with the annotation "(Upper G=V#)".

Musical notation for Pattern B in 3/4 time. The exercise consists of four measures of eighth-note pairs, each pair beamed together and slurred. The notes are: G4-A4, Bb4-C5, D5-E5, F5-G5. The final measure contains a whole rest with the annotation "(Upper G=V#)".

Musical notation for Pattern C in 4/4 time. The exercise consists of four measures of eighth-note pairs, each pair beamed together and slurred. The notes are: G4-A4, Bb4-C5, D5-E5, F5-G5. The final measure contains a whole rest with the annotation "(Upper G=V#)".

Musical notation for Pattern D in 4/4 time. The exercise consists of four measures of eighth-note pairs, each pair beamed together and slurred. The notes are: G4-A4, Bb4-C5, D5-E5, F5-G5. The final measure contains a whole rest with the annotation "(Upper G=V#)".

Musical notation for Pattern E in 2/4 time. The exercise consists of four measures of eighth-note pairs, each pair beamed together and slurred. The notes are: G4-A4, Bb4-C5, D5-E5, F5-G5. The final measure contains a whole rest with the annotation "(Upper G=V#)".

## 7. Warm-up (Unison/Duet/Chord)

Musical notation for Warm-up in 4/4 time. The exercise consists of four measures of eighth-note pairs, each pair beamed together and slurred. The notes are: G4-A4, Bb4-C5, D5-E5, F5-G5. The final measure contains a whole rest.

do re me fa sol do,do re,ti me,la fa,sol do,sol do re me fa sol

# Trumpet 1

# Warm-ups in Eb/Bb

Scott McKee

## 1. Eb Concert 5's



## 2. Bb Concert 5's



## 3. Eb Concert Scale



## 4. Eb Concert Triads & Thirds



## 5. Bb Concert Triads & Thirds



## 6. Rhythm Patterns



## 7. Warm-up (Unison/Duet/Chord)



do re me fa sol do,do re,ti me,la fa,sol do,sol do re me fa sol

# Warm-ups in Eb/Bb

Trumpet 2 & 3

Scott McKee

## 1. Eb Concert 5's



## 2. Bb Concert 5's



## 3. Eb Concert Scale



## 4. Eb Concert Triads & Thirds



## 5. Bb Concert Triads & Thirds



## 6. Rhythm Patterns

### Pattern A



### Pattern B



### Pattern C



### Pattern D



### Pattern E



## 7. Warm-up (Unison/Duet/Chord)



do re me fa sol do,do re,ti me,la fa,sol do,sol do re me fa sol



# Warm-ups in Eb/Bb

## Trombone 1 & 2

Scott McKee

### 1. Eb Concert 5's



### 2. Bb Concert 5's



### 3. Eb Concert Scale



### 4. Eb Concert Triads & Thirds



### 5. Bb Concert Triads & Thirds



### 6. Rhythm Patterns

#### Pattern A



#### Pattern B



#### Pattern C



#### Pattern D



#### Pattern E



### 7. Warm-up (Unison/Duet/Chord)



do re me fa sol do,do re,ti me,la fa,sol do,sol do re me fa sol

# Warm-ups in Eb/Bb

**Trombone 3**  
Bass Trombone

Scott McKee

**1. Eb Concert 5's**

Musical notation for Eb Concert 5's: A bass clef staff in Eb major (two flats) and 4/4 time. The exercise consists of two measures of eighth-note runs ascending and descending, each slurred together, followed by a whole rest.

**2. Bb Concert 5's**

Musical notation for Bb Concert 5's: A bass clef staff in Bb major (three flats) and 4/4 time. The exercise consists of two measures of eighth-note runs ascending and descending, each slurred together, followed by a whole rest.

**3. Eb Concert Scale**

Musical notation for Eb Concert Scale: A bass clef staff in Eb major (two flats) and 4/4 time. The exercise consists of four measures of eighth-note runs ascending and descending, each slurred together, followed by a whole rest.

**4. Eb Concert Triads & Thirds**

Musical notation for Eb Concert Triads & Thirds: A bass clef staff in Eb major (two flats) and 4/4 time. The exercise consists of four measures of eighth-note runs ascending and descending, each slurred together, followed by a whole rest.

**5. Bb Concert Triads & Thirds**

Musical notation for Bb Concert Triads & Thirds: A bass clef staff in Bb major (three flats) and 4/4 time. The exercise consists of four measures of eighth-note runs ascending and descending, each slurred together, followed by a whole rest.

**6. Rhythm Patterns**

**Pattern A**

Musical notation for Pattern A: A bass clef staff in Eb major (two flats) and 4/4 time. The exercise consists of four measures of eighth-note patterns: quarter notes, eighth notes, and quarter notes, followed by a whole rest.

**Pattern B**

Musical notation for Pattern B: A bass clef staff in Eb major (two flats) and 3/4 time. The exercise consists of four measures of eighth-note patterns: quarter notes, eighth notes, and quarter notes, followed by a whole rest.

**Pattern C**

Musical notation for Pattern C: A bass clef staff in Eb major (two flats) and 4/4 time. The exercise consists of four measures of sixteenth-note patterns: eighth notes, sixteenth notes, eighth notes, and sixteenth notes, followed by a whole rest.

**Pattern D**

Musical notation for Pattern D: A bass clef staff in Eb major (two flats) and 4/4 time. The exercise consists of four measures of eighth-note patterns: quarter notes, eighth notes, quarter notes, and eighth notes, followed by a whole rest.

**Pattern E**

Musical notation for Pattern E: A bass clef staff in Eb major (two flats) and 2/4 time. The exercise consists of four measures of eighth-note patterns: quarter notes, eighth notes, quarter notes, and eighth notes, followed by a whole rest.

**7. Warm-up (Unison/Duet/Chord)**

Musical notation for Warm-up: A bass clef staff in Eb major (two flats) and 4/4 time. The exercise consists of four measures of whole notes: do, do, re, ti, me, la, fa, sol, do, sol, do, re, me, fa, sol.

do re me fa sol do,do re,ti me,la fa,sol do,sol do re me fa sol





# Warm-ups in Eb/Bb

Baritone B.C.

Scott McKee

## 1. Eb Concert 5's



## 2. Bb Concert 5's



## 3. Eb Concert Scale



## 4. Eb Concert Triads & Thirds



## 5. Bb Concert Triads & Thirds



## 6. Rhythm Patterns



## 7. Warm-up (Unison/Duet/Chord)



do re me fa sol do,do re,ti me,la fa,sol do,sol do re me fa sol

# Tuba

# Warm-ups in Eb/Bb

Scott McKee

## 1. Eb Concert 5's

Musical notation for Exercise 1: Eb Concert 5's. It is written in bass clef, Eb major (two flats), and 4/4 time. The exercise consists of two measures of eighth-note runs, each with a slur underneath, followed by a whole rest.

## 2. Bb Concert 5's

Musical notation for Exercise 2: Bb Concert 5's. It is written in bass clef, Bb major (three flats), and 4/4 time. The exercise consists of two measures of eighth-note runs, each with a slur underneath, followed by a whole rest.

## 3. Eb Concert Scale

Musical notation for Exercise 3: Eb Concert Scale. It is written in bass clef, Eb major, and 4/4 time. The exercise consists of four measures of eighth-note runs, each with a slur underneath, followed by a whole rest.

## 4. Eb Concert Triads & Thirds

Musical notation for Exercise 4: Eb Concert Triads & Thirds. It is written in bass clef, Eb major, and 4/4 time. The exercise consists of four measures of eighth-note runs, each with a slur underneath, followed by a whole rest.

## 5. Bb Concert Triads & Thirds

Musical notation for Exercise 5: Bb Concert Triads & Thirds. It is written in bass clef, Bb major, and 4/4 time. The exercise consists of four measures of eighth-note runs, each with a slur underneath, followed by a whole rest.

## 6. Rhythm Patterns

### Pattern A

Musical notation for Pattern A. It is written in bass clef, Eb major, and 4/4 time. The pattern consists of eighth-note pairs with a quarter rest, followed by eighth-note pairs with a quarter rest, repeated four times, ending with a whole rest.

### Pattern B

Musical notation for Pattern B. It is written in bass clef, Eb major, and 3/4 time. The pattern consists of eighth-note pairs with a quarter rest, followed by eighth-note pairs with a quarter rest, repeated three times, ending with a whole rest.

### Pattern C

Musical notation for Pattern C. It is written in bass clef, Eb major, and 4/4 time. The pattern consists of eighth-note pairs with a quarter rest, repeated eight times, ending with a whole rest.

### Pattern D

Musical notation for Pattern D. It is written in bass clef, Eb major, and 4/4 time. The pattern consists of eighth-note pairs with a quarter rest, followed by eighth-note pairs with a quarter rest, repeated four times, ending with a whole rest.

### Pattern E

Musical notation for Pattern E. It is written in bass clef, Eb major, and 2/4 time. The pattern consists of eighth-note pairs with a quarter rest, repeated four times, ending with a whole rest.

## 7. Warm-up (Unison/Duet/Chord)

Musical notation for Exercise 7: Warm-up (Unison/Duet/Chord). It is written in bass clef, Eb major, and 4/4 time. The exercise consists of three measures of whole notes, each with a slur underneath, followed by a whole rest. The notes are do, re, me, fa, sol, do, do, re, ti, me, la, fa, sol, do, sol, do, re, me, fa, sol.

do re me fa sol      do,do re,ti me,la fa,sol do,sol      do re me fa sol

# Warm-ups in Eb/Bb

## Snare (Single Stroke)

Scott McKee

### 1. Right Hand Isolation

### 2. Left Hand Isolation

### 3. Right Hand Lead (Quarter Notes-Eighth Notes)

### 4. Right Hand Lead (Eighth-Sixteenth Notes)

### 5. Left Hand Lead (Eighth-Sixteenth Notes)

### 6. Rhythm Patterns (use alternating hands)

A1 (Single Stroke Roll)

A2

B1

B2

C1

C2

D1

D2

E1

E2

7. Warm-up (Unison/Duet/Chord) -TACET-  
*(Get ready for the first piece of the day)*

# Warm-ups in Eb/Bb

## Snare (Flams)

Scott McKee

### 1. Right Hand Lead (Up Stroke)

### 2. Left Hand Lead (Up Stroke)

### 3. Right Hand Lead (Quarter Note Flam)

### 4. Left Hand Lead (Quarter note Flam)

### 5. Right Hand Lead (Eighth note Flam)

### 6. Rhythm Patterns (use alternating hands)

(Multiple Bounce Roll)

A1

A2

B1

B2

C1

C2

D1

D2

E1

E2

### 7. Warm-up (Unison/Duet/Chord) -TACET- (Get ready for the first piece of the day)